

Special Rate Variation (SRV)

Introduction – Your services, your options, your rates.

Council has had a special rate variation (SRV) of 9 per cent for five years, which ends this financial year. A decision now needs to be made on whether to submit an application to the Independent Pricing and Regulatory Tribunal (IPART) for a future SRV.

The current SRV provided Council with approximately \$5.6 million per annum in additional funding to:

- deliver much needed road and other works to bring community infrastructure up to a satisfactory standard.
- increase graffiti removal, parks maintenance, cleaning, mechanical work and general maintenance

Our main focus has been road, bridge and footpath works; improvement and restoration of public buildings; drainage works which reduce the impact of flooding; and renovation of sporting fields.

While Council will apply the regular 3 per cent annual rate peg increase, this is just to stay in line with the Consumer Price Index (CPI) and meet regular increasing costs in the broader economy.

The approval for the current SRV expires in June 2014. To continue this variation, Council will need to lodge a new application to IPART. Should Council not proceed with lodging an application or lodge an application and be unsuccessful, our annual operational budget will decrease by approximately \$6.3 million. This means Council will need to reduce capital works and services.

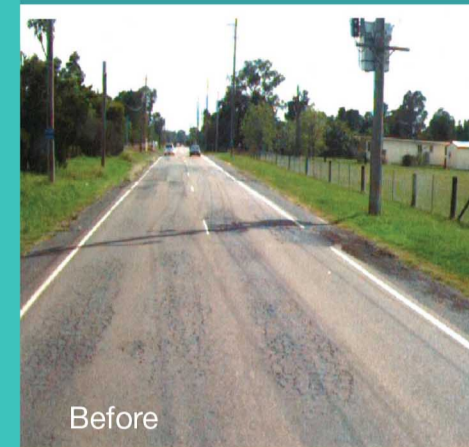
In addition to the continuation of the current SRV, the 10-year Long Term Financial Plan indicates that Council will have a funding gap over and above the current 9 per cent and will require additional funds to meet the infrastructure and service level demands of a growing city. The community has requested an increased and additional range of services, particularly in the areas of traffic and transport infrastructure, safety and the look and feel of the city. To deliver these additional services, additional funding is required.



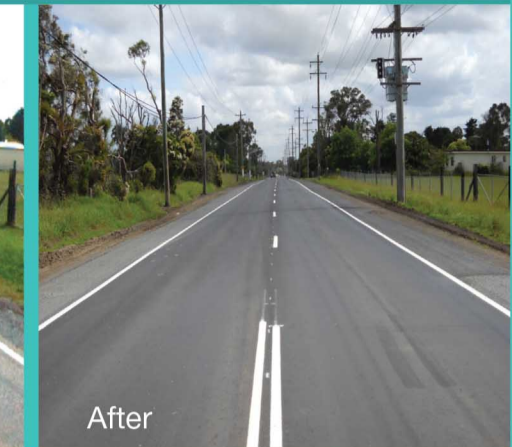
In the past three years, Council has spoken to more than 3,500 people. During this process, the community has requested an increased and additional range of services, particularly in the areas of road safety and a cleaner, newer looking city.

What did Council deliver with the previous special rate variation?

Heavy patching, reconstruction and resurfacing to restore failed pavement at Devonshire Road, Kemps Creek

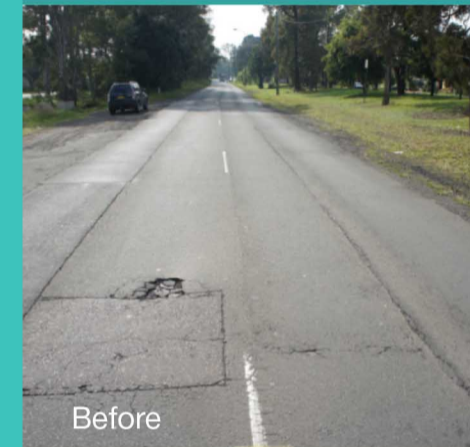


Before

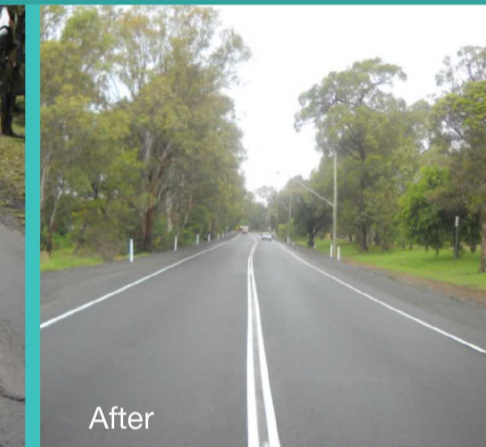


After

Governor Macquarie Drive upgrade

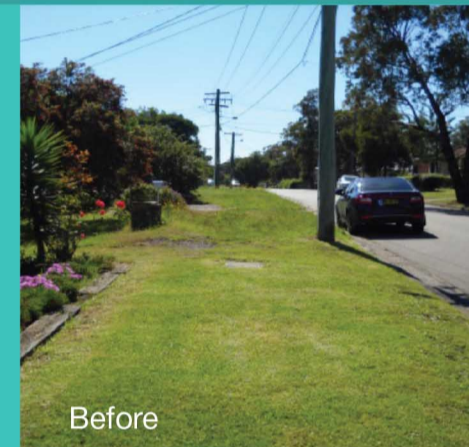


Before



After

Hinkler Avenue and McGirr Parade, Warwick Farm
Improving footpaths and cycleways

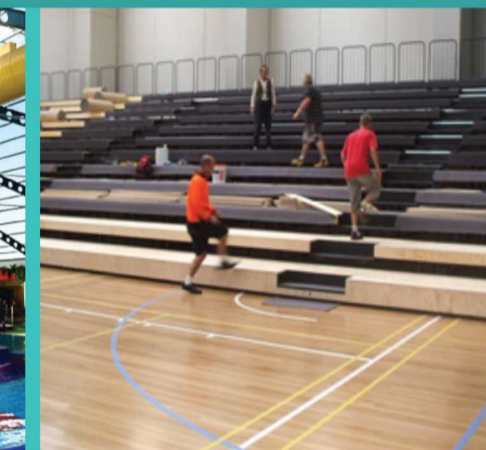


Before



After

Whitlam Leisure Centre
More than \$700,000 in works undertaken.



Parks and playgrounds
Roberts Park, Chipping Norton Vasta Park



What are the options?

| WHAT WILL I GET WITH EACH OPTION? | OPTION 1 MAINTAIN SERVICES | OPTION 2 REDUCE SERVICES | OPTION 3 INCREASE SERVICES |
|-----------------------------------|---|---|--|
| | Keep the existing rate variation (9%) only and maintain current services, road works and infrastructure delivery to the community. | Lose the existing variation (-9%) and reduce services, road works and infrastructure delivery to the community | Increase rate variation (9% + 2.5% for two years) and increase services, road works and infrastructure delivery to the community. |
| Roads, Bridges and Footpaths | \$20 million | \$8.3 million | \$29.9 million |
| Community Centres and Facilities | \$9.7 million | \$4.1 million | \$12.4 million |
| Parks and Sportsgrounds | \$6.8 million | \$2.5 million | \$8.2 million |
| Protection from flooding | \$3.6 million | \$1.3 million | \$3.9 million |
| Total Funds Available | \$40.1 million available for the next four years | \$16.1 million available for the next four years | \$54.4 million available for the next four years |
| How much will it cost me? | The average rate increase per house will be \$1.75 cents per week or \$118 a year to continue the same level of services, road works and infrastructure delivery. Based on current rates payable, the increase in your rates next year in comparison to this year is 62 cents per week or \$32 per year. | The average rate decrease per house will be \$1.13 per week or \$59 a year. Council will reduce services, road works and infrastructure delivery. | The average rate increase per house will be \$2.73 per week or \$142 in the first year. It will be a further \$1.19 per week or \$62 in the second year. Some of the additional works which Council will be able to deliver include: • Resurfacing and essential works to 13 additional roads and 15 new bus shelters across the whole local government area. • Critical upgrades and floodlighting to sports grounds to improve safety, lighting, access and parking. • A special playground for children with a disability. • Upgrades to 7 playgrounds. • Upgrades to 7 additional childcare and community centres. |

How can you provide feedback?

Take the Survey

Before Council proceeds with making a decision regarding the special rate variation they are seeking community feedback on each of the three options. The survey is available on Council's website www.liverpool.nsw.gov.au



Need more information:

For more information on the special rate variation, including how the options will affect you directly and the types of projects that will be funded by the special rate variation, please visit www.liverpool.nsw.gov.au or phone Council on 1300 36 2170. Council has many people who speak different languages as well as access to a translating service for residents who speak limited or no English.

Liverpool City Council, Level 2, 33 Moore Street, Liverpool NSW 2170
Phone: 1300 36 2170 Visit: www.liverpool.nsw.gov.au
E-mail: lcc@liverpool.nsw.gov.au NRS: 13 36 77
Language aides: Council has many people who speak different languages.
Call 1300 36 2170 and ask for your preferred language

