

M12 Motorway

Community update

February 2024



Australian Government



Aerial view of the M12 bridge work at the entrance to Western Sydney International Airport, Badgerys Creek

The Australian and NSW governments are securing a brighter future for Western Sydney's residents, visitors and workers by delivering the new M12 Motorway.

The M12 Motorway project team has celebrated the end of 2023 with the achievement of some key milestones. Take a look at some key highlights in our latest community update.

As of December 2023, we have completed:



Landscaping work



Electronics devices (ITS system)



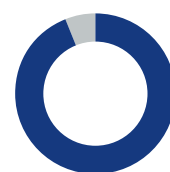
Mainline pavement



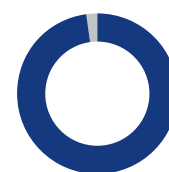
Bridge works



Stormwater work



Utilities work



Earthworks



Transport for NSW acknowledges the Dharug people as the Traditional Custodians of the lands on which we work and pays respect to Elders past and present.

Key highlights of the year 2023



Bulk earthworks nearly complete across the project

The M12 Motorway team has completed over 98 per cent of bulk earthworks across both West and Central packages. Over 2.5 million cubic metres of earth materials has been moved to make way for the motorway. The M12 Motorway is designed to have gradual inclines, declines and long curves, creating a more fuel-efficient motorway for road users. All the earth materials removed were reused to build embankments and raise other lower sections to ensure that we reduced waste.



Aerial view of construction of Cosgorves Creek bridge and the Airport Interchange looking east



First mainline pavement trial at The Northern Road

First mainline pavement laid on the M12 Motorway

In October 2023, we laid the first road pavement with 216 cubic metres of concrete poured at the western end of the Central package. Similarly, 200 cubic metres of concrete was laid by the West package near The Northern Road.

The project will place 76,000 cubic metres of concrete pavement, followed by 39,000 cubic metres of continuously reinforced concrete pavement. This concrete will be produced using our on-site batch plants. The pavement work will be a major focus for the project team this year.



Concrete batch plant on Clifton Avenue Kemp's Creek

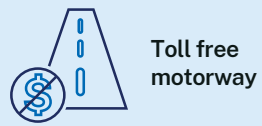
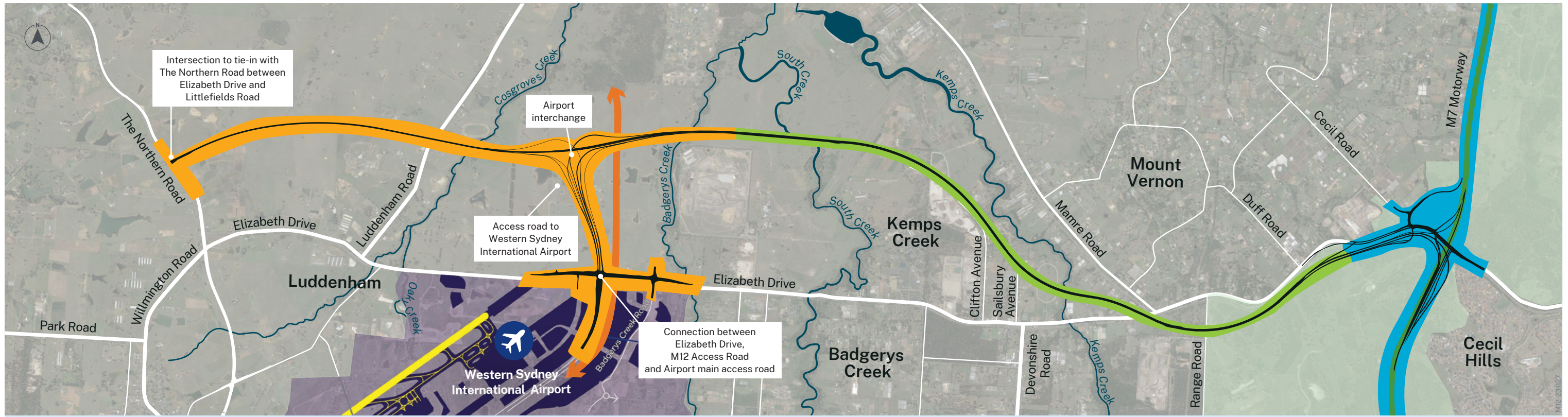


South Creek bridge girder installation

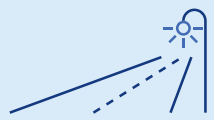
Building the longest bridge on the M12 Motorway

The bridge over South Creek is the longest bridge being built on the M12 Motorway project, with a total length of 395 metres. It will be a twin bridge with shared path on the northern side of the motorway.

South Creek bridge has 65 piles with a total of 12 spans of girders at 33 metres each. Some of these bridge piles are located in South Creek, over four metres below the existing ground level. We have installed all 144 girders needed for the South Creek bridge. We have started pouring concrete on the bridge deck, which will involve using approximately 1650 cubic metres of concrete and 350 tonnes of reinforced steel.



Toll free motorway



16 kilometres
of new shared path built with lighting for safety



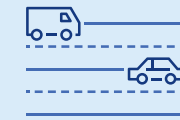
Direct access to Western Sydney International Airport



Travel time savings up to **16 minutes**



Capacity of **52,000** vehicles a day



Four lanes with a wide median to add an extra lane in future

KEY

- M12 West
- M12 Central
- M7-M12 Integration
- M7 Motorway
- Parkland
- Creek
- Western Sydney International Airport
- Sydney Metro

Upcoming works and milestones

On the M12 Motorway in the coming months, we will:

- continue pavement and drainage works across different sections of the motorway
- complete construction of Kemps Creek, Water Tower Access Road, Luddenham Road, Consgroves Creek and Badgerys Creek bridges
- continue concrete pours on Elizabeth Drive twin bridges near Mamre Road
- divert traffic under the new bridge deck on Elizabeth Drive near Mamre Road at Kemps Creek
- start landscaping work on the motorway
- switch traffic to newly realigned Elizabeth Drive at Badgerys Creek in front of the airport
- start building the decks of three bridges supporting the Airport interchange.



Elizabeth Drive bridge near Mamre Road in Kemps Creek

Fast facts as of December 2023

10,425 metres of stormwater pipes installed	2,585,587 cubic metres of completed earthworks	25,460 metres of fence installed
574 tonnes of timber reused	439 piles installed	5,215 metres of water mains installed
2,452,187 hours worked	146,350 tonnes of topsoil reused	454 girders installed

Temporary roundabout at the intersection of Elizabeth Drive and Devonshire Road in Kemps Creek

In September 2023, we started work on installing a temporary roundabout at the intersection of Elizabeth Drive and Devonshire Road in Kemps Creek to improve safety in the area.

So far, we have:

- set up the site compound in Salisbury Avenue to store vehicles and equipment
- installed stormwater, kerb and utilities protection
- completed earthworks and laid road base for the pavement
- built concrete roundabout and raised median along Elizabeth Drive
- completed asphaltting, line markings and signage work.

The construction work to build the temporary roundabout is now complete.

We thank the community for your patience during this essential work.

Access to Salisbury Avenue is left turn in and out due to road safety reasons. There are alternative access routes available for light and heavy vehicles travelling westbound and wanting to turn into Salisbury Avenue, Kemps Creek. Light vehicles can use Devonshire Road, Cross Street and Western Road. Heavy vehicles can use the roundabout at Badgerys Creek and Mamre Road to make u-turns.



Extrusion of kerb on southwest corner of Devonshire Road and Elizabeth Drive Intersection



Completed kerb on southwest corner of Devonshire Road and Elizabeth Drive intersection

Seed collection and propagation in collaboration with Toolijoo Nursery

The landscaping design for the M12 Motorway aims to bring balance to the natural environment by sourcing seeds from the local region to vegetate the motorway when it is complete.

We are working with Toolijoo to carry out seed collection and propagation for collection of these native species seeds.

Native grassland and grassy woodland plants are attractive to pollinators, resilient to pests, aesthetically beautiful, and a low fire risk.

Seeds are then propagated at Toolijoo nursery in low phosphorous fertiliser, low moisture and full sun conditions to ensure the production of tough, hardy plants with high field survival rates. Planting lists have been co-ordinated between the design and seed collection teams to ensure widespread planting is maximised within the project.



Seed propagation from M12 clearing work at Toolijoo nursery



Plants from Seed propagation at Toolijoo nursery

One Million Turtles Community Conservation Program

Transport for NSW is working with Western Sydney University and the One Million Turtles Community Conservation Program to transform the landscape of wildlife conservation and road safety in Western Sydney.

The project uses AI technology to detect turtles on roads from dashcam footage and safeguard freshwater turtles, enhancing road safety and preserving local biodiversity. This technology will help identify turtle road mortality hotspots, allowing for targeted conservation efforts.

Western Sydney University has developed a predictive nesting and habitat tool called TurtleSAT and is working with Transport to trial innovative turtle barrier concepts designed to guide turtles away from the roads around these turtle hotspots.

Find more information at <https://1millionturtles.com>.



Australian Eastern Long-necked turtle.

M12 projects joining hands to engage in sustainable practices

A win for project collaboration and sustainability has occurred between the M12 West and East packages. The M12 East project has delivered approximately 200 timber logs from their vegetation clearing activities to M12 West package for the purpose of constructing an art sculpture as part of the landscape design of the M12 Motorway.

These recycled tree logs will be used to build the base for the art structure near the Airport interchange. This initiative supports both the project's commitment to reduce waste and maximise the sustainability on the project.



Tree logs on M12 West site supplied from M12 East clearing site



Scan the QR code or visit bit.ly/47sLxSV to fill out the survey form and provide your feedback to the M12 Motorway.



Scan the QR code or visit bit.ly/3tPQKq9 to watch the latest construction progress update of the M12 Motorway.

Contact us



Project Infoline **1800 517 155**



m12motorway@transport.nsw.gov.au



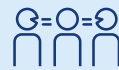
nswroads.work/m12



Transport for NSW
PO Box 973 Parramatta NSW 2124



For the latest traffic updates:
Call 132 701, visit livetraffic.com
or download the app Live Traffic NSW



Interpreter service

For languages other than English call **131 450**
Arabic • Greek • Hindi • Mandarin • Vietnamese

لطلب خدمة الترجمة الشفهية للغات غير الإنجليزية اتصل
برقم 131 450

Για υπηρεσίες διερμηνείας σε άλλες γλώσσες εκτός από
τα Αγγλικά καλέστε το **131 450**

अंग्रेज़ी के अतिरिक्त अन्य भाषाओं के लिए दुभाषिया सेवा
131 450 पर कॉल करें

获取英语以外的其他语言口译协助服务可以致电**131 450**

Để có dịch vụ thông ngôn cho các ngôn ngữ khác tiếng
Anh, gọi số **131 450**